

TAIT TOUGH

The Toughest Radios in the Industry

DESIGNED TO BE TOUGH

Tait clients have tough jobs. Police, fire, emergency services, utility workers, miners, and oil riggers face challenging conditions every day. They need communications equipment that is easy to use and totally reliable. That's why Tait engineers all of our products to work together to create some of the toughest, mission critical communications solutions ever made.

WHY TAIT?

Our radios have been tested and proven to survive, even in the harshest environments. With Tait, you can trust that your people can communicate whenever they need to.

“We needed rugged radios. Any police officer knows that your radio gets knocked over all the time. It can fly off your belt when you are running in pursuit, it can fall off your desk and on the ground, incidents like that happen all the time. Tait radios proved tough.”

FRANK KIERNAN
DIRECTOR OF EMERGENCY COMMUNICATIONS
CITY OF MERIDEN, CT, USA



WE PUT OUR RADIOS TO THE TEST AND THEY EXCEED EXPECTATIONS



We drop them from 6 feet onto concrete – that's 50% higher than the MIL-STD-810G specification test. We drop each radio dozens of times from different angles, ensuring the durability of everything from battery and antenna fittings to internal components and the screen. MIL-STD-810G refers to protection against: Low pressure, Low temperature, High temperature, Temperature shock, Solar radiation, Rain, Humidity, Salt fog, Dust, Vibration, and Shock.



Tait portable radios feature various IP (Ingress Protection) ratings for water and dust protection.

IP68: Can be immersed in water at a depth of two meters for thirty minutes, and a depth of one meter for two hours.

IP67: Can be immersed in water at a depth of one meter for thirty minutes.

IP65: Tested against water jets, 12.5L per minute, 30kPa from three meters for at least three minutes.



Every component is selected and tested so the radio can endure harder knocks and more extreme temperatures. The radios are assembled and tested in our own factory, delivering maximum quality where it matters most.



PROTECT YOUR MOST VALUABLE RESOURCE - YOUR PEOPLE

- ▶ Tait portables include built-in GPS capability with on-screen display
- ▶ Programmable emergency button sends instant distress call
- ▶ Man Down alarm can trigger distress call if user is prone
- ▶ Lone Worker feature transmits alert if user fails to check in

Clear, concise communications in disaster situations can be the difference between life and death.

Tait portable radios offer a host of features to keep your workforce safe and productive. Built-in GPS capability for location data with on-screen display, transmission and GeoFencing - Automated Location Controlled Radio Behavior. Automated alarms like Man Down and Lone Worker provide a virtual safety net. A one-touch emergency button can send an instant request for assistance.

“There’s a hundred-percent confidence in the Tait Communications system that people are going to be able to get through when they need to.”

**RICK DOBBE
COMMUNICATIONS ENGINEER
BLACK HILLS POWER, SOUTH DAKOTA**



P25 AND DMR PLATFORMS DELIVER MARKET-LEADING SECURITY

- ▶ ARC4, DES and AES encryption options
- ▶ Award winning P25 Key Management Facility
- ▶ Remote disable stolen or lost radios
- ▶ Secure access to and control of fleet and network programming

Mission critical radio managers have three key security objectives: to protect their radio system from external attack, to avoid accidental network damage, and to prevent unauthorized access to information.

Governments demand mission critical systems meet cyber-security requirements, adhere to privacy and confidentiality regulations, and meet data access and data privacy requirements.

Tait platforms will exceed your expectations of network security and information control. Tait Managed Services are certified for ISO27001:2013 (Information Security Management System). Tait P25 is equipped with an award winning key management facility and end-to-end encryption.

“The crime indices have decreased. Now in São Paulo, you hear of very few bank robberies or many other crimes that used to be common. Often criminals used to follow police activity but not anymore. Now we have the security of our encryption keys.”

JOILTON CHAVES
CHIEF OF TELECOMMUNICATIONS
SÃO PAULO CIVIL POLICE, SP, BRAZIL



TAIT PORTABLES

TAIT 9000 SERIES PORTABLES BUILT TOUGH TO SURVIVE

- ▶ Standard 9000 series portables are IP68 and IP65 rated
- ▶ Intrinsically Safe options available, IP67 and IP65 rated
- ▶ Exceeds Military Standard (MIL-STD) 810G
- ▶ Easy migration paths with multiple analog and digital modes
- ▶ Intuitive and easy-to-use programming tools available

Few electronic devices take more abuse than mission critical portable radios. Our clients need a communication device that will work the first time, every time.

We designed every detail of our portables to be tough, capable of surviving extreme temperature, humidity, salt fog, vibration, altitude and solar radiation.

But Tait portables aren't just tough. They're also lightweight, equipped with GPS, capable of multiple analog and digital modes, and built with open standards to ensure interoperability with other vendors and neighboring organizations. The 9000 series is available in a range of high-visibility colors and branding options for personalization or talkgroup identification.

POWER OPTIONS

- ▶ Long battery shift life to stay connected and effective for longer
- ▶ Have a fresh battery at the ready with battery-only charger
- ▶ Rugged in-vehicle radio charger is secure, even in crashes

Even the best communications hardware in the world is rendered useless without a tough, long-life battery, and great options for charging to keep users connected over long shifts.

Tait portable radios offer 1880 mAh and 2400 mAh battery options, offering up to fifteen hours shift life in analog, and nineteen hours in DMR or P25 Phase 2 modes. Our unique in-vehicle charger provides secure charging even with the roughest treatment, ensuring there is always a fresh battery available.



TAIT MOBILES

TAIT 9000 SERIES MOBILES FOR DEMANDING ENVIRONMENTS

- ▶ Radio body, control heads and microphones are all IP54 rated against dust and splashing water
- ▶ Exceeds Military Standard (MIL-STD) 810G
- ▶ Large four-line LCD with icons to display key parameters
- ▶ Configurable to suit your needs: dual head and remote mount (6m and 12m options)
- ▶ Programmable orange emergency key

Designed with users in mind to ensure effective everyday operation. Tait mobiles are built to withstand the heat and bumps that regularly occur on the road.

For safe, secure and effective communications on the move, Tait mobiles feature Lone Worker, a covert microphone and stealth emergency modes. For additional operational security, the TM9400 supports end-to-end encryption.

Supercharge the performance of your existing or new Tait mobile radio with the new Tait Unified Vehicle platform. Tait Unified Vehicle provides a vehicle area network that combines mobile radio and broadband connectivity with an on-board edge computing and application platform.

“The radio system has helped improve our response times, which helps us better meet the needs of our community and our citizens that live here.”

**JONATHAN HABER
CHIEF OF POLICE
CITY OF BALCH SPRINGS, TEXAS**



TAIT CORE NETWORK

INDUSTRY LEADING RELIABILITY WHEN IT MATTERS MOST

- ▶ Resilient hardware designed and tested to mission critical industry standards
- ▶ Resilient hardware designed and tested to exceed industry standards.
- ▶ Dual supplies and mirror system for multiple levels of redundancy
- ▶ Tailored configurations with multiple backup options for system reliability

Clear and reliable communication is not just about reliable portables. Coverage is only as good as the core network you build, and Tait networks are exceptional.

Our systems and networks are designed with a range of dual redundancy and fail-soft configurations, mirrored system elements and fall-back modes so that your system keeps working even if problems occur. With a range of options including redundant linking and dual traffic paths, Tait designs your network so you can always rely on getting through.

“My tower guy accidentally dropped a Tait radio from a 100 meter tall tower - the radio is safe - and your repeater is not a repeater, it’s a tank! I always say all others are toys!”

**FRANCISCO TRIGO
MANAGER
CONECTIA, BUENOS AIRES, ARGENTINA**



TAIT ENABLE

CONTROL OF YOUR NETWORK IN THE PALM OF YOUR HANDS

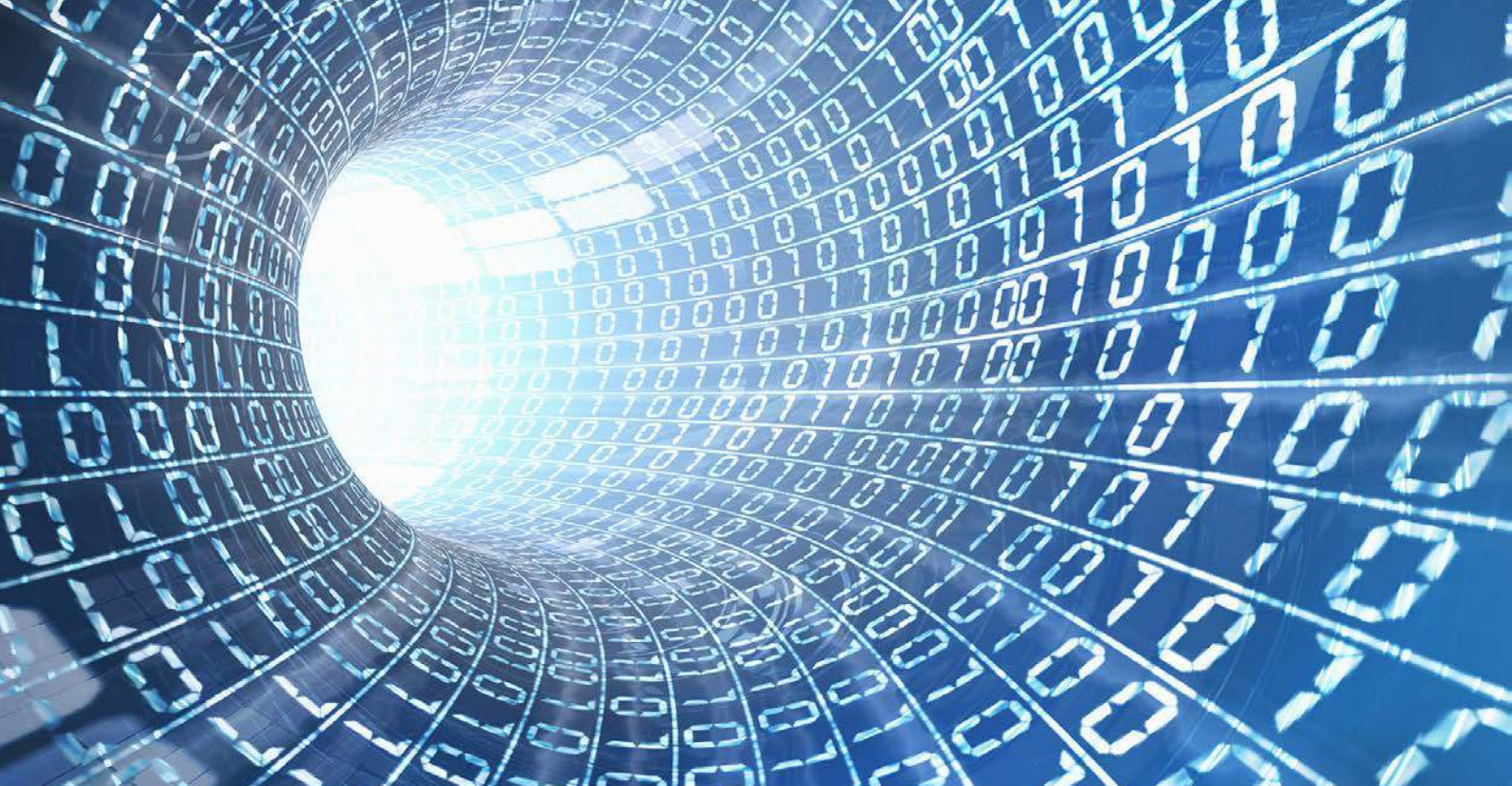
- ▶ Total visibility and control of your radio fleet from a central point
- ▶ Configure and update your radio fleet over the air
- ▶ Monitor the health of your radio network in real-time
- ▶ Secure your radio network with access management tools

Your critical communications are only as secure as the tools you use to manage them. The Tait Enable Suite is a comprehensive package of radio management software that offers peace of mind.

Gain real-time information on the performance of your network, to instantly respond to faults and plan for future optimization with Tait EnableMonitor and Tait EnableInsight. Actively manage and update your radio performance with Tait EnableFleet. Ensure only authorized personnel can access your radio programming with Tait EnableProtect Advanced System Key.

“The real benefit to us with EnableFleet is that I can have either our supplier or Tait make changes to our different radio programs remotely, and we only need someone with a laptop to plug into the radios to implement the changes.”

MYLES CONNEW
OPERATIONS MANAGER
EA NETWORKS, NEW ZEALAND



AN EVOLVING PLATFORM DESIGNED FOR TOMORROW

- ▶ Ready for integration with future devices and networks
- ▶ Diverse network of technology partners
- ▶ Easy migration between networks
- ▶ Wide range of accessories, with more on the horizon

Tait hardware operates in multiple modes and supports gateways to modern broadband networks, making migration between analog and digital, or conventional and trunked DMR and P25 networks as seamless as possible.

Tait maintains a great network of technology partners, providing a variety of solutions and accessories to compliment the needs of any organization. You can trust a Tait solution to be ready for whatever the future holds.

“It exceeds my expectations. As far as the communications system, the radio product, the product you sold me is excellent.”

**TERRY BRADSHAW
FIRE CHIEF
CARROLL COUNTY, MARYLAND**



UNIFY YOUR CELLULAR AND RADIO NETWORKS

- ▶ Tait push-to-talk over cellular and radio networks solution
- ▶ Data and custom applications in and around your vehicles
- ▶ Integrate Bluetooth, WiFi, Cellular, Radio and Satellite networks
- ▶ Rugged smartphones for demanding environments

Modern critical communications are no longer primarily voice based. The need for remote data and applications is well established, and will only grow.

Tait offers solutions for integration between the various networks you depend on, allowing users on different devices and networks to stay in reliable contact. Take advantage of cellular data in a rugged smartphone, supported by the coverage of a hardened radio network with the Tait TeamPTT. Utilize remote data, custom applications and mobile computing power with Tait Unified Vehicle.

“New-generation field personnel prefer the user friendliness of smartphones, but the reliability of cellular networks and devices is questionable.”

EDWIN SALIENDRA
ENGINEER
WESTERN POWER CORPORATION, AUSTRALIA

Tait has taken every care in compiling this brochure, but we're always innovating and therefore changes to our models, designs, technical specification, visuals and other information included in this brochure could occur. For the most up-to-date information and for a copy of our terms and conditions please visit our website www.taitradio.com. The words "Tait", "Tait Unified", the "Tait" logo and "Tait Unified" logo are trademarks of Tait International Limited.

Copyright © 2019 Tait International Limited Tait_B_Tait-Tough_v1.5

www.taittough.com