



# SmartOne

Cross-technology application solution

SmartOne is a professional application solution from Hytera. It combines a variety of functions of Professional Mobile Radio, such as dispatching, voice recording, AVL or camera monitoring, using one interface. Independent of mobile radio standards, it is possible to integrate and interconnect several mobile radio networks at the same time.



# Application

## SmartOne

Highly versatile applications are the foundation of effective communication and user-management.

SmartOne offers you a particularly comprehensive and flexible application solution. Using a single user interface, the software combines different radio technologies and functions.

By integrating the mobile radio standards TETRA, DMR (Conventional, XPT and Tier III) or MPT 1327, flexible coupling and migration between the technologies is possible.



### Highlights

#### **Comprehensive dispatching solution and expanded functions**

SmartOne offers complete and powerful dispatching functions, such as voice calls, GPS positioning services, messaging functions and voice recording. Furthermore, the software can be expanded by a series of plugins, e.g. for displaying IP-connected CCTV cameras. In addition, it is possible to integrate browser-based web content, such as big data applications, or web-based analyses.

#### **Integration of TETRA, DMR Conventional, XPT, DMR Trunking and MPT**

The application solution can be connected in parallel to different mobile radio systems. All call, GPS or message activities are consequently merged into a single user interface.

#### **Cross-technology communication**

SmartOne connects subscribers of different mobile radio systems. As a gateway, the application solution is capable of interconnecting group calls and individual subscribers in common voice calls and text messages.

#### **User-friendly and adaptable user interface**

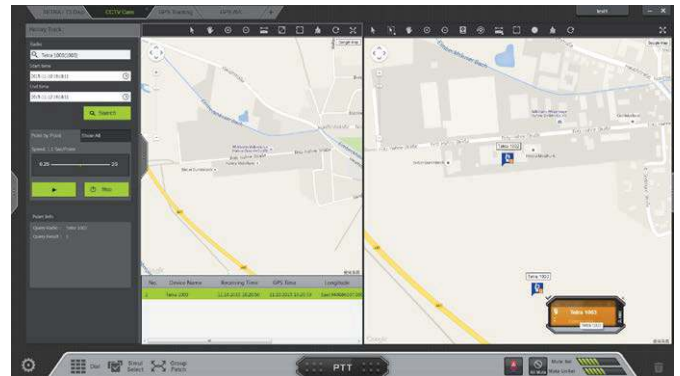
The user interface of every workstation can be adapted flexibly, using drag-and-drop, it is possible to create several work areas and individualise them, using plugins, images and texts. The operation is done intuitively using drag-and-drop.

#### **Wired or wireless connection**

Besides the IP-connected network connection, SmartOne can also be used as a radio dispatcher for all radio technologies. This allows, for example, to use the dispatcher functions in mobile emergency vehicles.

## Functions

- Integration of dispatching, voice recording, SDS messages, GPS, CCTV cameras and gateway services in one central application
- Connection of TETRA, DMR (conventional and trunked radio) and analogue (MPT1327) mobile radio systems, as well as private automatic branch exchanges (PABX) and the public telephone network (PSTN)
- Interconnecting voice calls or message exchange between different radio technologies using a software gateway
- Support of control room workstations using a graphical expansion to several monitors
- Flexible integration of web applications using an integrated browser plugin, e.g. for big data applications
- Wired or wireless connections to the radio networks
- Complete, multi-client capability, through individualisable responsibility and functional areas for every SmartOne client



## System architecture

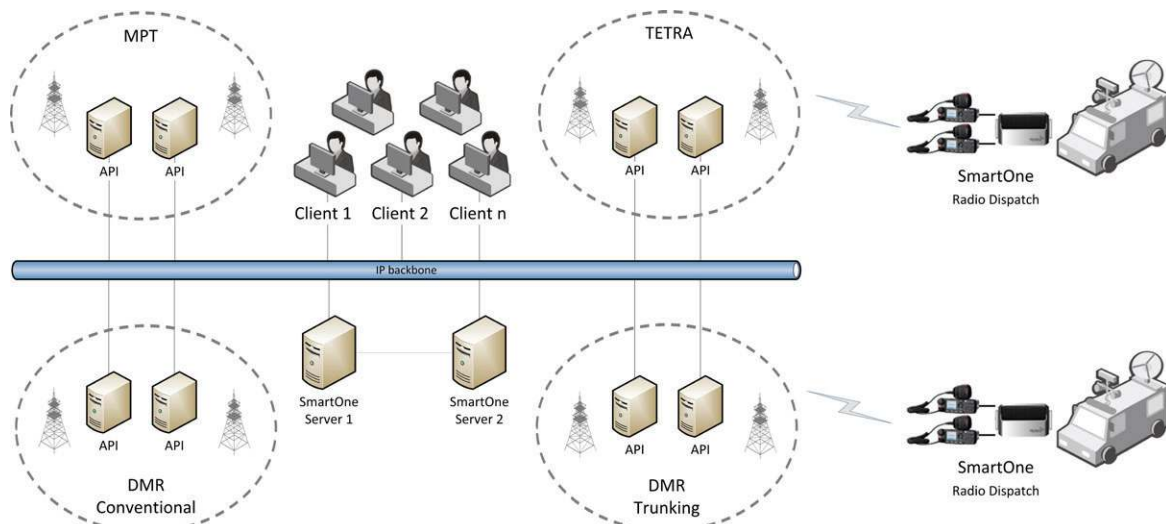
Thanks to its sophisticated system architecture, SmartOne offers particularly high reliability.

With server redundancy, every SmartOne workstation can connect with two central servers. If the active server fails, the hot-standby server automatically takes over the service and ensures continuous operation.

The API connection redundancy enables every SmartOne server to connect to several infrastructure API interfaces. This allows the continuation of dispatching work, even in the case of partial failure of an infrastructure node.

This ranges from a single, stand-alone solution - where all software is installed on a single workstation computer - up to complete client-server architecture with central servers and remote workstations.

The system is designed completely for multi-client capability. Every SmartOne user can be assigned corresponding radio groups and subscribers. This allocation creates an even more sophisticated degree of responsibility.





## Technical Data

SmartOne dispatch functions	
Calls	Individual call Group call Emergency call Priority call Broadcast Call Network-wide call Call forwarding Call queueing Conference call Group interconnection Subscriber interconnection DGNA
Positioning services	GPS positioning Real-time route on the map Individual call on the map DGNA on the map Geofencing alerting POI (Points Of Interest map marking)
Expanded functions	Ambience listening of radios Discrete monitoring of radios Talk into calls Local voice recording Local logging
Security functions	Activating (revive) / deactivating (stun) radios Permanently deactivating (kill) radios E2EE
Messages	Text message Status message Callback message Emergency message Message template E-mail access

System specifications	
Number of subscribers supported by the server	100,000 per server
Call capacity of the server (incoming / outgoing)	1,000 calls per server
GPS capacity of the server	500 per second
Call capacity per workstation	28 calls per workstation
Number of workstations	200 per server
Number of subscribers supported by the workstation	5,000 per workstation
Number of subscribers in the GPS display	200 per second
Storage requirement of server	300 MB per channel hour*
Time delay	< 20 ms
Jitter	< 10 ms
Packet loss	< 0.1 %
Bandwidth (for voice)	80 Kbps per call*

\* Varies depending on call codec.

The functions of SmartOne depend on the functions of the respective radio system.

All technical specifications were tested according to the relevant standards. Subject to change on the basis of continuous development.

Your Hytera partner:



### Hytera Communications Corporation Limited

**Address:** Hytera Communications (UK) Co. Ltd.

Hytera House, 939 Yeovil Road, Slough, Berkshire. SL1 4NH, UK.

**Tel:** +44 (0) 1753 826 120 **Fax:** +44 (0) 1753 826 121

**www.hytera.co.uk** **info@hyterauk.co.uk**

Further information can be found at:

[www.hytera.co.uk](http://www.hytera.co.uk)

Keep up to date with Hytera on social media.



Hytera reserves the right to modify the product design and the specifications. In case of a printing error, Hytera does not accept any liability. All specifications are subject to change without notice.

Encryption features are optional and have to be configured separately. They are also subject to European export regulations.

**HYT** Hytera are registered trademarks of Hytera Communications Corp. Ltd. © 2017 Hytera Communication Corp., Ltd. All rights reserved.