

SmartPTT SCADA

SMARTPTT EXTENTION FOR REMOTE EQUIPMENT CONTROL AND ASSET MANAGEMENT

FULL POTENTIAL OF SCADA SYSTEM IN YOUR SMARTPTT DISPATCH CONSOLE

Raise efficiency of business processes management
with remote equipment control and corresponding staff coordination



Simplify equipment monitoring and control processes at industrial facilities in

-  ENERGY
-  UTILITIES
-  MINING
-  OIL & GAS
-  AGRICULTURE
-  EMERGENCY SERVICES



Real-time remote monitoring



Accounting for resource consumption



Notifications to the dispatcher about problems



Remote equipment control



Simultaneous control of a large number of facilities



Informing responsible persons about emergency situations – message on radio, on mobile or on email

FULL POTENTIAL OF SCADA SYSTEM IN YOUR SMARTPTT DISPATCH CONSOLE

DETECT FAILURES IMMEDIATELY
AND CORRECT THEM BEFORE
THEY BECOME A CATASTROPHE

LOWER THE NUMBER OF NEEDLESS ON-SITE
VISITS AND USE WORKFORCE AND VEHICLES
WHERE THEY ARE REALLY ESSENTIAL



Simultaneous control of a large amount of facilities with visualization on the map and on SmartPTT custom console



Real-time equipment monitoring using a set of widgets (gauges, bars, indicators, boards, graphs and so on)



Remote equipment control using a set of control buttons



Notifications on the map to draw attention to the problem point



Detailed information by clicking on the point (out of range parameters are highlighted in color)



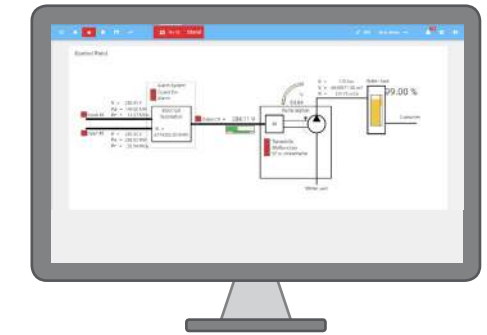
Customized user interface with 3 color schemes to choose. Opt the way of parameters' visualization and set the location of widgets on the screen using drag&drop tool



Special color scheme with limited use of color draws operator's attention to the parameters that deviate from a normal state while other elements remain invisible



Historical trends of equipment performance and event logging allow scheduling maintenance and improving workflow



Visualization of the current state of the controlled facility using mnemonic schemes or facility's photo for better understanding of what is happening there

SINGLE SMARTPTT DISPATCHING SYSTEM WITH SMARTPTT SCADA MODULE

is a comprehensive solution for business process optimization

VS

TRADITIONAL SCADA SOFTWARE (HMI)

It is so difficult to master and run a system based on traditional software for SCADA systems that only programmers can do it as a rule

Complicated programming and drawing mnemonic schemes

No additional features provided by dispatch software, e.g.:

The dispatcher does not know exactly the staff location and exposes personnel to danger by executing control commands

The dispatcher needs to remember who to inform or call, and spend time sending messages

SITUATIONAL CONTROL

All personnel, controlled facilities, and their status - on one screen

HIGH-QUALITY DECISION-MAKING

Decisions are made on the facts and in view of the possible danger to personnel in the vicinity of the equipment

Automated notifications improves dispatcher's efficiency

More effective management of technological and production processes through remote control of technological equipment and appropriate coordination of personnel

RAPID RESPONSE IN EMERGENCIES

In case of emergency or malfunction at the facility the dispatcher sends the closest specialist (based upon their location information) to resolve the issue

REDUCED LOAD ON THE DISPATCHER

Informing responsible employees about emergency situations, accidents, breakdowns is made automatically, according to the set rules of the notification (including messages on radios due to the integration with SmartPTT)

QUICK START

Fast and simple process of system launch from scratch without special knowledge and skills in programming

VS

SEPARATE SCADA SYSTEMS

The dispatcher wastes valuable time to understand and assess the situation and make the right decision based on the data obtained from two different, unrelated systems.

The dispatcher needs to remember who to inform or call, and spend time sending messages

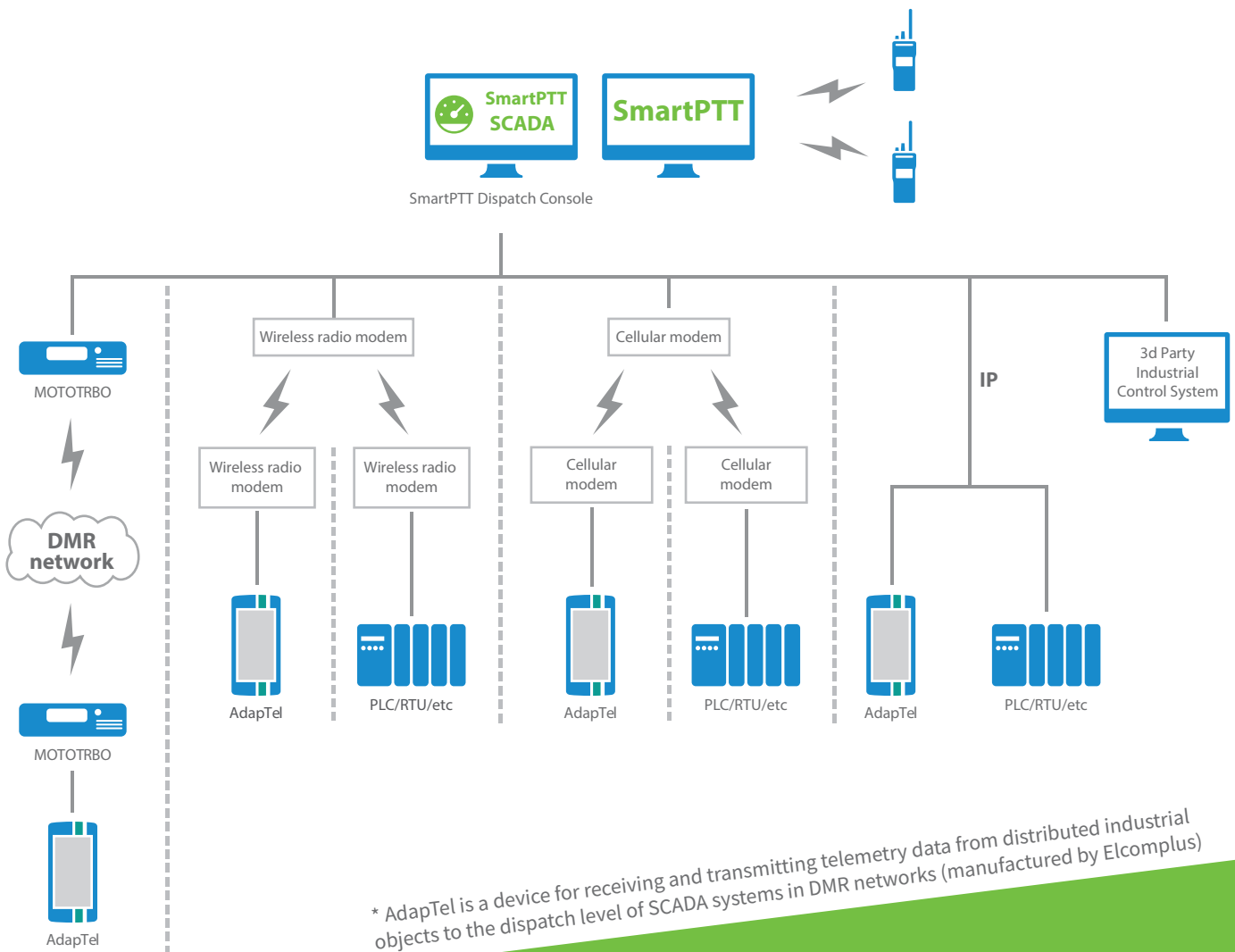
NOT ONLY DMR

NOT ONLY ADAPTEL

DMR
IP network
VHF radio modems
Cellular modems
Broadband equipment (Wi-Fi, MESH, etc.)
LoRaWAN
Etc.

**YOU CAN CONNECT ADAPTEL*
OR ANY THIRD-PARTY DEVICE
TO SMARTPTT SCADA VIA ANY
COMMUNICATION CHANNEL**

Motorola ACE
PLC / RTUs
Meters
and sensors
with digital
interface
Other
devices



** AdapTel is a device for receiving and transmitting telemetry data from distributed industrial objects to the dispatch level of SCADA systems in DMR networks (manufactured by Elcomplus)*

SMARTPTT SCADA

IS YOUR STEP TOWARDS EFFECTIVE BUSINESS PROCESS MANAGEMENT

MONITOR, CONTROL, ANALYZE, AND COORDINATE

sales@smartptt.com
smartptt.com