

# MOTOTRBO™ CAPACITY MAX











## HIGH CAPACITY, COVERAGE AND CONTROL

The next generation of trunking has arrived. MOTOTRBO Capacity Max blends real-world experience with technological innovation to deliver a communications solution that's tailor-made for your organization.

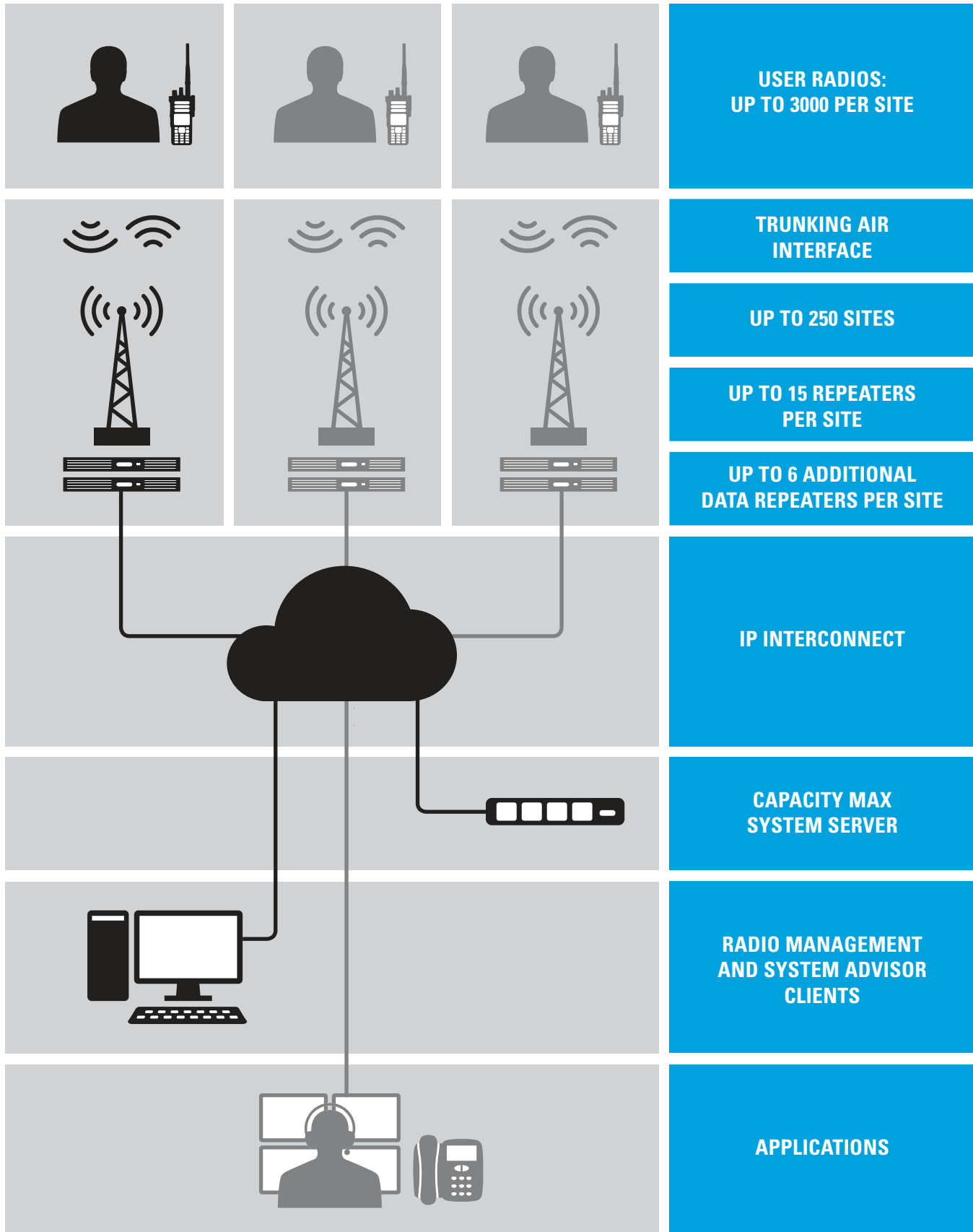
Your communications system is at the heart of your organization: keeping your workers productive and maintaining safety at all times. So when you're a large organization with sophisticated requirements and the highest standards, you should choose the best technology and the most comprehensive solution: MOTOTRBO Capacity Max.

Capacity Max is a trunked radio system with a dedicated control channel at every site. The centralized architecture reduces deployment complexity and operational cost, while increasing flexibility and scalability. The system offers a crisp, responsive user experience, with high security and reliability. And a suite of built-in tools and applications gives you complete control and visibility of your system's operation.

## MOTOTRBO SYSTEM TYPES

| CONVENTIONAL   | IP SITE CONNECT  | CAPACITY PLUS  | CONNECT PLUS  | CAPACITY MAX   |
|--|--|--|---|--|
| NON - TRUNKING   |  | TRUNKING   |   |  |
| BASELINE CAPACITY AND COVERAGE   | ENHANCED COVERAGE  | COST-EFFECTIVE COVERAGE AND CAPACITY   | COVERAGE AND CAPACITY   | CAPACITY, COVERAGE AND CONTROL   |
| <br>SINGLE SITE     | <br>UP TO 15 SITES  | <br>UP TO 15 SITES            | <br>UP TO 250 SITES           | <br>UP TO 250 SITES           |
| <br>UP TO 200 USERS | <br>UP TO 200 USERS | <br>UP TO 1600 USERS PER SITE | <br>UP TO 3000 USERS PER SITE | <br>UP TO 3000 USERS PER SITE |

# SYSTEM ARCHITECTURE



**USER RADIOS:  
UP TO 3000 PER SITE**

**TRUNKING AIR  
INTERFACE**

**UP TO 250 SITES**

**UP TO 15 REPEATERS  
PER SITE**

**UP TO 6 ADDITIONAL  
DATA REPEATERS PER SITE**

**IP INTERCONNECT**

**CAPACITY MAX  
SYSTEM SERVER**

**RADIO MANAGEMENT  
AND SYSTEM ADVISOR  
CLIENTS**

**APPLICATIONS**

# HIGH CAPACITY, COVERAGE AND CONTROL

## HIGH PERFORMANCE

Capacity Max has a fast, responsive user experience, with robust performance under load and rapid, smooth roaming across sites. Security is a high priority, with options for authentication, access control and encryption. And to ensure optimum operation, Capacity Max incorporates sophisticated fault management and call monitoring tools.

## EFFICIENT

The system is built around a standardized IP network: there is no requirement for specialized interconnections. Signaling and traffic flow has been optimized to make the most efficient use of network bandwidth. The Capacity Max System Server (CMSS) centralizes control and management functions, as well as hosting voice applications gateways.

## SCALABLE

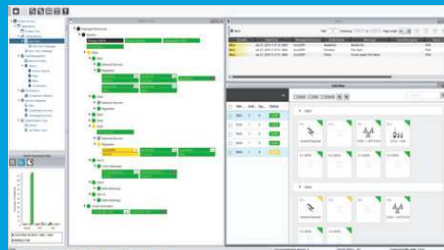
Capacity Max is scalable to 250 sites, with up to 15 voice and data repeaters and up to 6 additional data-only repeaters per site, giving high-quality connectivity to up to 3,000 users at each location. The system uses standardized infrastructure, so you can migrate to Capacity Max from a MOTOTRBO IP Site Connect, Capacity Plus or Connect Plus system and reuse your earlier investment.



### RADIO MANAGEMENT



### SYSTEM ADVISOR



## RADIO COMPATIBILITY



XPR 7000 and XPR 7000e Series      SL 7000 and SL 7000e Series



XPR 5000 and XPR 5000e Series

## APPLICATIONS



Capacity Max supports a broad ecosystem of voice and data applications from the MOTOTRBO Application Developer Program.

For Control Room Solutions, Capacity Max supports the Motorola Sold and Supported **SmartPTT PLUS**, **TRBOnet PLUS** and **AVTEC Scout**.

To find out more about Capacity Max, please go to [motorolasolutions.com/mototrbo](http://motorolasolutions.com/mototrbo)

Motorola Solutions, Inc. 500 West Monroe Street, Chicago, IL 60661 U.S.A. [motorolasolutions.com](http://motorolasolutions.com)

MOTOROLA, MOTO, MOTOROLA SOLUTIONS and the Stylized M Logo are trademarks or registered trademarks of Motorola Trademark Holdings, LLC and are used under license. All other trademarks are the property of their respective owners. ©2016 Motorola Solutions, Inc. All rights reserved. 12-2016

**MOTOTRBO**  
DIGITAL  
REMASTERED.



Distributed by:

**Radiocomms Systems Ltd**  
Unit 2, The Chase Centre,  
8 Chase Road, Park Royal,  
London  
NW10 6QD  
T: 033 3939 0022  
E: [sales@radiocomms.co.uk](mailto:sales@radiocomms.co.uk)  
[www.radiocomms.co.uk](http://www.radiocomms.co.uk)